



The caRoI™ Duratech 250 manual winch is designed to be installed in permanent installation (ex: wall mounting) or for temporary tasks, attached to Tracpode, Tracpode Pro, Davitrac, Davimast\* anchors points using its bracket. The caRoI™ Duratech winch is primarily used for material lifting in various industrial environments. The device is designed to be used in situations where the winch body is exposed to mildly corrosive environments, and where the wire rope may be in contact with aggressive or corrosive substances.

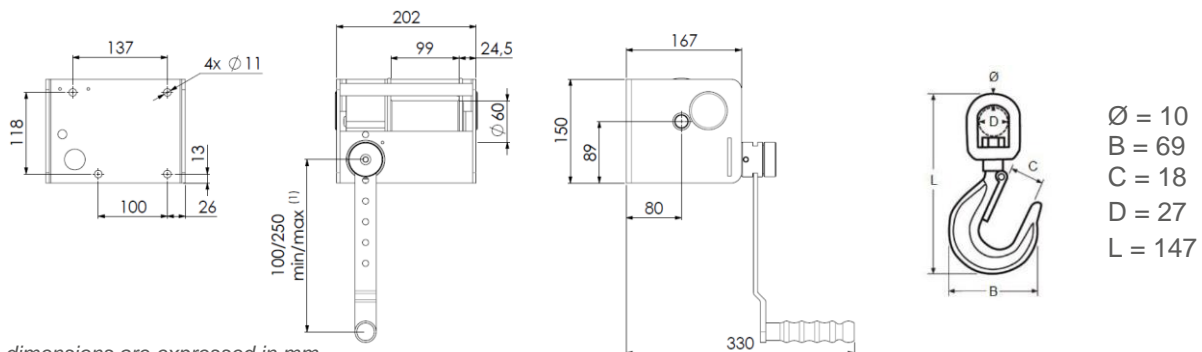
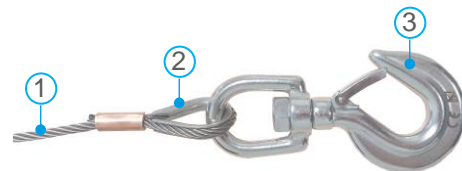
\* Information about anchors points and their associated brackets can be obtained upon request to Tractel or [www.tractel.com](http://www.tractel.com).

## APPLICATIONS

- Chemical industry
- Sewage treatment plant
- Confined space
- Urban wastewater network
- Others

## TECHNICAL CHARACTERISTICS

- Compact and robust device
- W.L.L\*\*: 250 kg
- Lifting height: 20 m
- Rigid frame and painted drum
- Stainless steel components:
  1. Lifting wire rope (AISI 304)
  2. Thimble (AISI 316)
  3. Swivel hook with safety latch (AISI 316)
- Drum disengageable when empty by an easily accessible lever
- Double braking safety thanks to the self-braking worm gear and the double spring ratchet brake
- User and mechanical parts protections through a removable protective cover for maintenance
- Variable length control crank (6 positions) <sup>(1)</sup> allowing the user to adjust the effort or speed according to the load
- Option to remove the crank to disable its use
- Easily transportable thanks to its crossbar
- Designed and built to withstand dynamic test at 1.1 x W.L.L\*\*, static test at 1.5 x W.L.L\*\* and to guarantee minimum mechanical resistance of 4 x W.L.L\*\*
- Equipped a QR code enabling product traceability and technical monitoring



W.L.L**(kg)	250
Lifting height (m)	20
Wire rope diameter (mm)	Ø4.7
Lifting distance per crank turn (mm)	19
Force on crank (daN) <sup>(2)</sup>	9

\*\* : W.L.L = Working Load Limit.

<sup>(1)</sup> : Per 30 mm increment

<sup>(2)</sup> : At last winding layer and maximum length



## APPLICABLES STANDARDS

- European directive 2006/42/EC
  - UKCA Regulation
- Complies with all relevant provisions of the 2008 Supply of Machinery (Safety) Regulations (SI 2008/1597) as amended (SI 2011/1042, SI 2011/2157, SI 2019/696)

## PRODUCT CODE AND LOGISTIC INFORMATION

Code	Description	Code EAN	Net weight equipped (kg)	Weight (incl. packaging) (kg)	Packaging dimensions (mm)
299229	caRoI™ Duratech 250	3600232992295	13.2	13.8	250x230x200